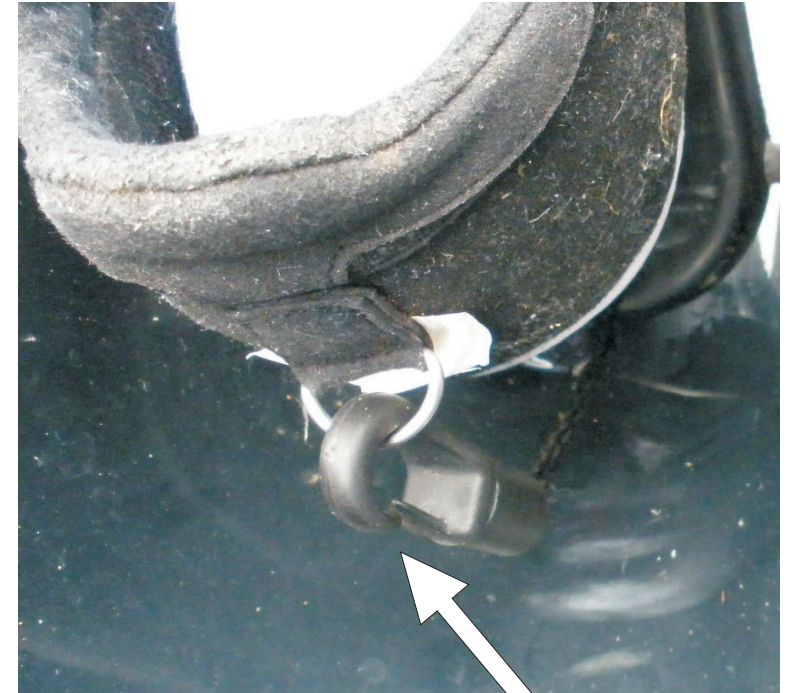




Clip Fitted Incorrectly
Opening is towards the shoe and clip may become detached



Clip Fitted Correctly
Opening is away from the shoe and 'D' ring should run up and down the solid side of the clip



Sculler Capsize
String appeared to pull out of fitting during sculling boat capsized

Wintech Heel Restraints

- 1 - Many clips fitted the wrong way around and may become detached
- 2 - Potential for string to pull out of fitting and may fail when needed